

WE ARE **TKA**

START OF SCHOOL PLAN

THE KING'S ACADEMY

Where Christ is King



THE KING'S ACADEMY

Where Christ is King



Safety at TKA

The King's Academy is planning to resume daily on-campus instruction for all students this fall with remote learning options. As we prepare for a safe return to school, with limited disruptions and enhanced health protocols, TKA has created a dedicated Reopening Team. The Reopening team has gathered research, made recommendations, and feels confident TKA is able to return to campus with the robust student life offerings for which King's is known. While we will proceed with school on-campus as planned, things will look different as we adapt to new protocols to provide safety for our students and extended TKA family. Our promise to provide a high-quality educational experience, a nurturing environment, and a biblically based discipleship plan, both inside and outside of the classroom, remains unchanged.

HEALTH PROTOCOLS

- School personnel will undergo training on best practices related to preventing the spread of sickness and following established safety protocols.
- All employees will have their temperature taken and will not be permitted to work if their temperature is over 100.4 degrees F, in accordance with CDC guidelines.
- Students will have their temperatures taken upon campus arrival. Those who present with a temperature of 100.4 degrees F or higher or COVID-19 symptoms will be sent home to self-isolate, recover, and recuperate.
- Upon arrival, visitors will have their temperature taken and complete screening questions.
- Students who develop a temperature or other concerning symptoms during the day will be sent to an isolated area, under the supervision of the school nurse, until a parent arrives.
- Hand sanitizer stations will be located throughout the campus and students and employees will clean hands multiple times throughout the day.
- Please see our COVID-19 Management Plan for additional details.

SOCIAL DISTANCING

- Classroom furniture will be organized in a manner that will allow students to maintain proper social distancing as they learn.
- Campus signage will be used to encourage proper social distancing.
- Redesigned Café seating and single use containers will be utilized.
- We will forego field trips, and parent visits to campus during the first semester will be limited.
- Assemblies, chapels, events, and performances will be adjusted and hosted in various small group formats.
- Class sizes have been adjusted as much as possible.
- Athletics will follow FHSAA guidelines and government and public health regulations.

CLEANING & SANITIZING

- We have added hand sanitizer stations in every classroom, all entrances, and common areas.
- High touch point areas (door handles, desks, etc.) are scheduled for more frequent disinfecting throughout the day.
- Electrostatic handheld machines and pump sprayers will be frequently used.
- Each evening, the entire campus is cleaned, sanitized, and disinfected by a professional team. This cleaning contract includes each classroom desk.
- We have installed UV light bars in all air conditioning units. Additionally, all air filters are inspected and changed on a scheduled basis.

PERSONAL ACCOUNTABILITY

- The Parent-Student handbook provides guidelines for parents regarding sick children and staying home. We will continue to ask parents to monitor their children's health and make decisions about school attendance, accordingly.
- Faculty and staff are required to wear a protective face covering.
- Students are required to wear face coverings on school buses and during the school day.
- Training and processes will be in place for self-monitoring, self-reporting, and self-isolation.

Frequently Asked Questions

Q. When should I keep my child home from school?

A. If your child:

- has been exposed to someone with a positive COVID-19 test or your child has a diagnosis of Coronavirus.
- has a fever of 100.4 F degrees or greater.
- has an unexplained cough.
- has shortness of breath.
- has an unexplained rash.
- has muscle aches.
- has diarrhea.

Q. When can my child return to school after being absent for a COVID-19 illness?

A. If all of the following is true:

- At least 24 hours have passed since recovery, defined as resolution of fever without the use of fever-reducing medications and improvement of respiratory symptoms.
- At least 10 days have passed since the beginning of symptoms.
- The student must be able to energetically participate in classroom activities, without the use of fever reducing medication.
- The student does not exhibit an uncontrollable cough.
- The student is able to take care of his/her own nasal secretions by using a tissue and washing hands.

Q. What if a student or staff member is presumed ill with COVID-19?

A. If all of the following is true:

- The student will be isolated within the sick room by the nurse and must be picked up immediately.
- The staff member will be sent home immediately.
- The parent or teacher will be instructed to contact their physician for further care and instructions.

Q. What if a student or staff member has a member of their household with a positive diagnosis of COVID-19?

A. The student or staff member will be required to self-isolate at home for 10 days.

Q. How will you notify those who may have been exposed to a staff member or student with COVID-19?

- A. The parents will be contacted either by the School or the Department of Health.
- Confidentiality of the student and/or staff member will be protected to the best of the School's ability.
 - The school will continue to provide pertinent updates through regular updates and via our website.

Q. And, will you require them to be tested before returning to campus?

- Testing will be decided by the physician/parent and the Department of Health.

Q. Will students be required to wear face coverings?

- A. Until further notice, students will be required to wear face coverings. Face coverings must be school appropriate and should be worn in accordance with CDC guidelines (cover mouth as well as nose).

Q. How will the school enforce physical distancing and face coverings?

- A. Employees will enforce physical distancing through a combination of visual reminders (signage and friendly reminders posted about the campus) in conjunction with school-wide and in-class reminders. The school will have discussions about the nature of healthy responsibility and following guidelines.

Q. What is acceptable face covering?

- A. Masks and/or face shields that cover the mouth and nose are allowed. The mask can be looped around the ears or a UV-type gaiter may be worn around the neck. Face coverings will be available through the school store but may be sourced from anywhere. For face coverings sourced from places other than the school store, they should be solid, free of any designs, graphics, patterns, words, or large logos. For those students with medical exemptions for wearing a mask, you will still need to wear a face shield.

Q. If I don't feel comfortable with my child attending in-person classes, are there alternative options?

- A. We believe the best option for most students is provided through an on-campus experience. However, there are other TKA options to consider for at-home learning. One of those options include remote learning with the student's TKA teacher(s) in grades K through 12 at full tuition. This option will require a minimum of a quarter/nine-weeks commitment. The alternative would be to enroll in TKA Online with contracted teachers in grades 6-12 for a minimum of one semester. If you are interested in either of these options you must inform your child's principal no later than Friday, July 31. Please utilize the attached form for any students you wish to enroll in remote learning.

Q. Will COVID-19 tests be available on campus?

A. No. All COVID-19 testing will be referred to a local health care provider.

Q. If I choose the remote learning program, will there be an “on-campus” spot available for my child later?

A. Parents choosing to learn remotely will be able to return to on-campus learning at quarterly re-entry points after communicating with the appropriate division administration.

Q. If King’s needed to return to online learning exclusively, will the remote learning program be the same as it was in the Spring?

A. Remote (online) learning would continue to be based off Google Classroom (elementary) and Moodle (middle and high school) platforms. The daily schedule would most likely expand slightly from that employed over the spring semester; however, the expectations for the online program (attendance, screen etiquette, behavior, testing, etc.) would be very much the same.

Q. Will there be a tuition adjustment if all students are required to learn from home?

A. We understand that learning looks very different when students are not in a normal class situation. However, when remote learning is in place, teachers and staff work very hard to deliver quality distance education, with many putting in more hours a week to serve students through remote learning than they would have to put in during normal in-class instruction.

We do have a board-approved plan to implement a tuition discount based on the number of full quarters the entire school must be online. This discount will likely range from 5 to 15 percent of annual tuition depending on the number of complete quarters that the school is exclusively online. (This plan would only be implemented if mandated by the county or state to hold classes online for a period of time until it is deemed safe for students and staff to physically return to campus.)

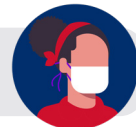
Q. How will safety and emergency drills, etc. be handled in a physically distanced format?

A. We will follow the existing safety and emergency protocols found in the Employee and Parent-Student handbooks. As a result of physical distancing and until we can run drills, all students will receive verbal and written instructions on lockdowns, shelter in place warnings, fires, bomb threats, evacuations, and tornado warning protocols. Faculty will go through these drills, as they do each year, during the August faculty orientation meetings in order to prepare themselves and their students.

Safety Protocols At-A-Glance

The King's Academy is committed to the health and safety of each student, faculty and staff member. During these unprecedented times, the following safety protocols have been established to ensure the safe reopening of the campus.

1 Face coverings required for faculty, staff and students



2 Daily health screenings for students, faculty, and staff



3 Socially distanced classroom seating



4 Hand sanitizing stations in each classroom and across campus



5 Classrooms equipped with cameras for recorded daily lessons



6 Daily professional cleaning/disinfection of classrooms/high traffic areas



7 Disinfecting UV light bars installed in AC units



8 New expanded outdoor covered dining areas



9 Lunch served in prepackaged single-use containers



10 Small group chapels



11 Safety training for faculty and staff



12 Virtual events for the first semester



13 No field trips for first quarter and no overnight trips for first semester



Safety Protocols At-A-Glance

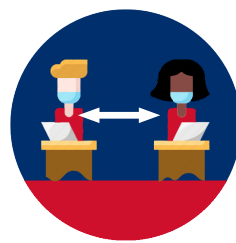
The King's Academy is committed to the health and safety of each student, faculty and staff member. During these unprecedented times, the following safety protocols have been established to ensure the safe reopening of the campus.



Face coverings required for faculty, staff & students



Daily health screenings for students, faculty, & staff



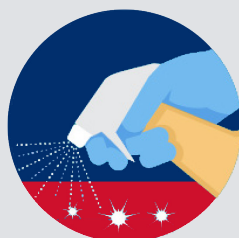
Socially distanced classroom seating



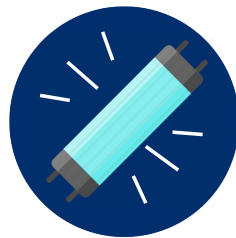
Hand sanitizing stations in each classroom & across campus



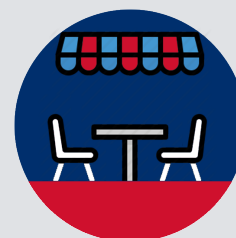
Classrooms equipped with cameras for recorded daily lessons



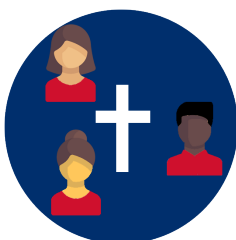
Daily professional cleaning & disinfection of classrooms & high traffic areas



Disinfecting UV light bars installed in AC units



New expanded outdoor covered dining areas & lunch served in prepackaged single-use containers



Small group chapels



Safety training for faculty & staff

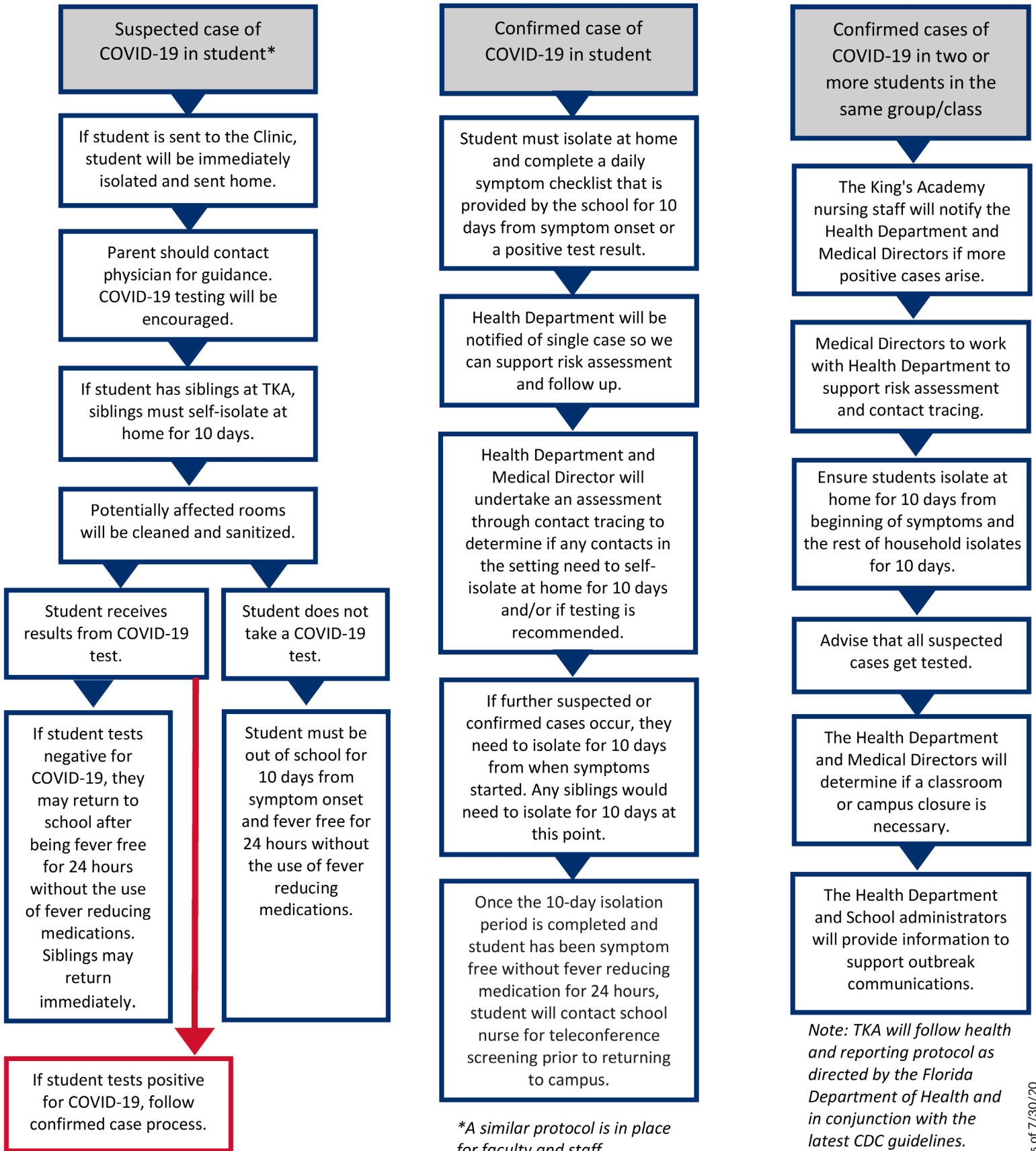


Virtual events for the first semester



No field trips for first quarter & no overnight trips for first semester

TKA's Management of COVID-19



**A similar protocol is in place for faculty and staff.*

Note: TKA will follow health and reporting protocol as directed by the Florida Department of Health and in conjunction with the latest CDC guidelines.

While it is our prayer that our entire school community will remain healthy, we do understand there will likely be cases of COVID-19 among our school family.



Keeping our TKA Spirit Roarin'

